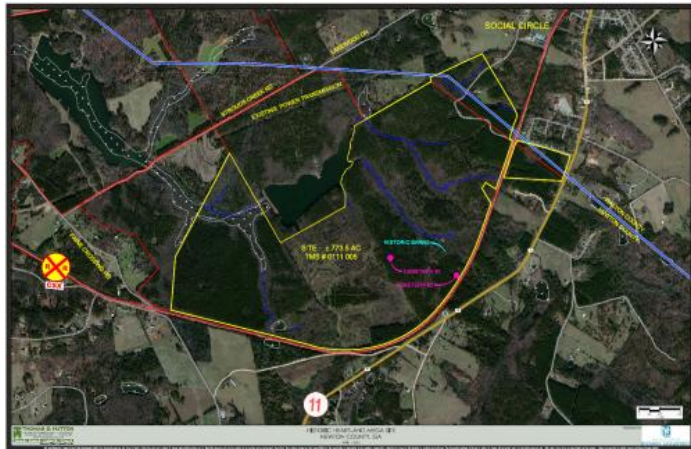


Georgia Historic Heartland Megaside

Industrial - Site



Newton County
1227 GA 11
Social Circle, GA 30025

For Sale or Lease
For Sale
Sale/Lease Price



Detail

Subtype: Site	Total Acreage: 991	Avail Acreage: 773.5	Largest Tract: 991
GRAD: Yes	Current Zoning: Agricultural		

Utilities

Electric Provider: Customer Choice @ 900 kW	Sewer Size: 12" Main	Water Size: 8" Main	Gas Size: 6" Main
---	--------------------------------	-------------------------------	-----------------------------

Transportation

Type	Name	Distance (mi)	Description
Interstate	20	1	Adjacent
Port	Savannah Port	183	Container port
Port	Brunswick Port	215	
Airport	Hartsfield-Jackson Atlanta	37	

Additional Information

Zoning Advantages: Job Tax Credit - Tier 2/\$3,000 (2017)

Georgia Historic Heartland Megaside

Existing buildings on the site: hunting lodge located on western portion of site/ 1 lake house

Utilities would need to be brought into site to serve the development. See attached utility exhibit. Sizes may be altered based on development demands

Georgia Historic Heartland Megasite

Information presented is obtained from sources deemed reliable. We assume no liability of errors, omissions or modifications.